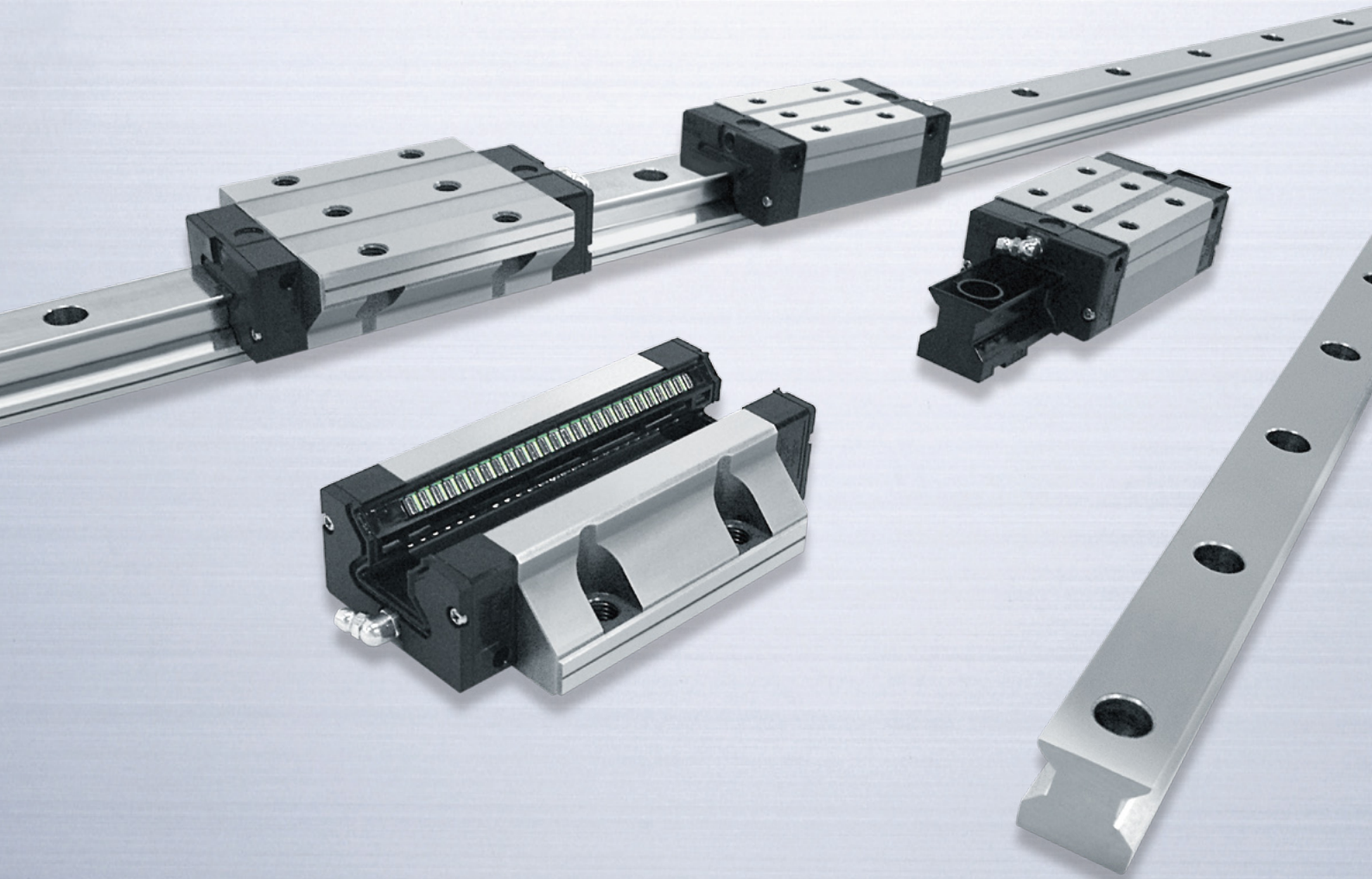


NSK Linear Guides™ Random-matching



High Precision Grade Roller Guide RA Series

New!



■ Features

- 1. Random-matching with high precision**
Random-matching is controlled at high precision grade P5 running parallelism.
- 2. Choice of preload according to the application**
The slight and medium preloads can be used for a variety of applications.
- 3. Interchangeable rails and roller slides**
The combination of roller slide and preload is up to the user.

■ Roller guide RA series lineup

	Roller slide preload	Slight preload	Medium preload
Lineup			
Preloaded assembly (Not interchangeable)		●	●
Random-matching High precision grade PH (same as high precision grade P5)		NEW ●	NEW ●

NSK Linear Guides™ Random-matching Roller Guide RA Series

Lineup

Model No.	Roller slide model						Random-matching High precision grade PH	
	AN	AL	BN	BL	EM	GM	Slight preload ZZ	Medium preload ZH
	RA25	○	○	○	○	○	○	○
RA30	○	○	○	○	○	○	○	○
RA35	○	○	○	○	○	○	○	○
RA45	○	○	○	○	○	○	○	○
RA55	○	○	○	○	○	○	○	○
RA65	○	—	○	—	○	○	○	○

New!

Roller slide model	Shape	
AN/AL		
BN/BL		

Roller slide model	Shape	
EM		
GM		

Accuracy

Running parallelism of PH grade is equivalent to P5 grade of preloaded assembly.

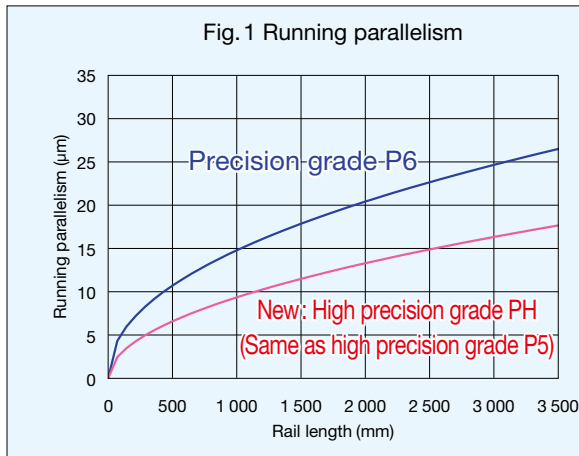


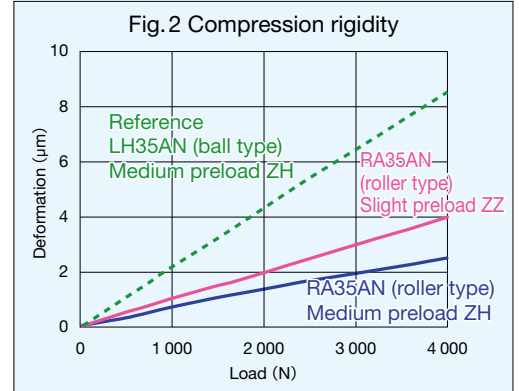
Table1 Assembly accuracy

Accuracy grade		Unit : µm
Random-matching High precision grade PH		
Mounting height H	Allowance	±20
	Variation	①15 ②25
Mounting width W ₂ or W ₃	Allowance	±25
	Variation	20

Note ① Variation on the same rail
② Variation on multiple rails

High rigidity

Rigidity of the RA series is higher than that of the ball slide type



Reference Number

[Rail]

Example: **R1A 35 1000 L C N *** PH Z**

Rail series code: R1A
Size: 35
Rail length (mm): 1000
Rail shape code L: Standard
Material/surface treatment code C: Special high carbon steel
Butting rail specification N: Non-Butting, L: Butting specification
Preload code Z: Common for slight preload ZZ and medium preload ZH
Accuracy code PH: High precision grade
Design serial number: ***

[Roller slide]

Example: **RAA 35 AN PH Z ****

Roller slide series code: RAA
Size: 35
Roller slide shape code: AN
Accuracy code PH: High precision grade, KH: High precision grade with NSK K1
Option code: **
No code: No surface treatment, -F: Fluoride low temperature chrome plating
Preload code Z: Slight preload ZZ, H: Medium preload ZH

[Assembly]

Example: **RA 35 1000 AN C 2 *** PH Z**

Series name: RA
Size: 35
Rail length (mm): 1000
Roller slide shape code: AN
Material/surface treatment code C: Special high carbon steel
Preload code Z: Slight preload ZZ, H: Medium preload ZH
Accuracy code PH: High precision grade, KH: High precision grade with K1
Design serial number: ***
Number of roller slides per rail: 2

For more information about NSK products, please contact: www.nsk.com

NSK Ltd. has a basic policy not to export any products or technology designated as controlled items by export-related laws. When exporting the products in this brochure, the laws of the exporting country must be observed. Specifications are subject to change without notice and without any obligation on the part of the manufacturer. Every care has been taken to ensure the accuracy of the data contained in this brochure, but no liability can be accepted for any loss or damage suffered through errors or omissions. We will gratefully acknowledge any additions or corrections.

NSK used environmentally friendly paper and printing methods for this publication.